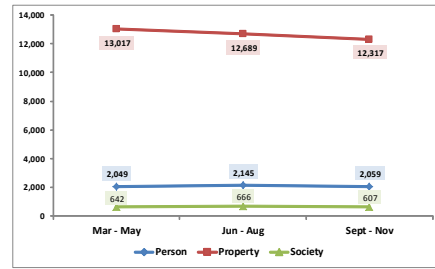


# PARKROSE INITIATIVE INTERVENTION JUNE - AUGUST 2017



## Portland 2017 March 01 - 2017 November 30

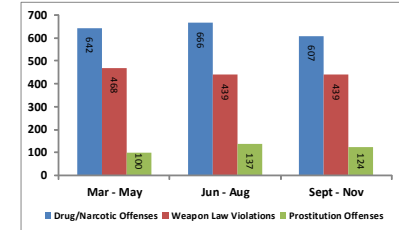
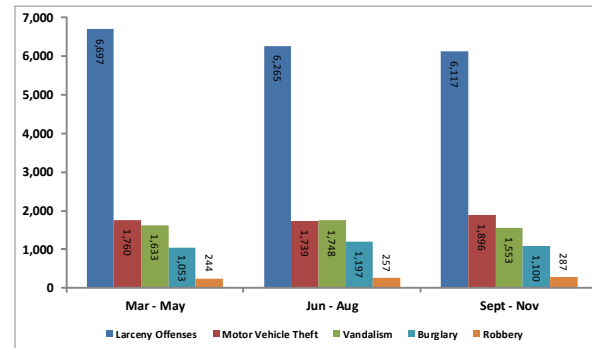


**Percent Change  
2017 (Sept - Nov) vs. (Jun - Aug)**

- Person Offense down 4.01%
- Property Offense down 2.93%
- Society Offense down 8.86%

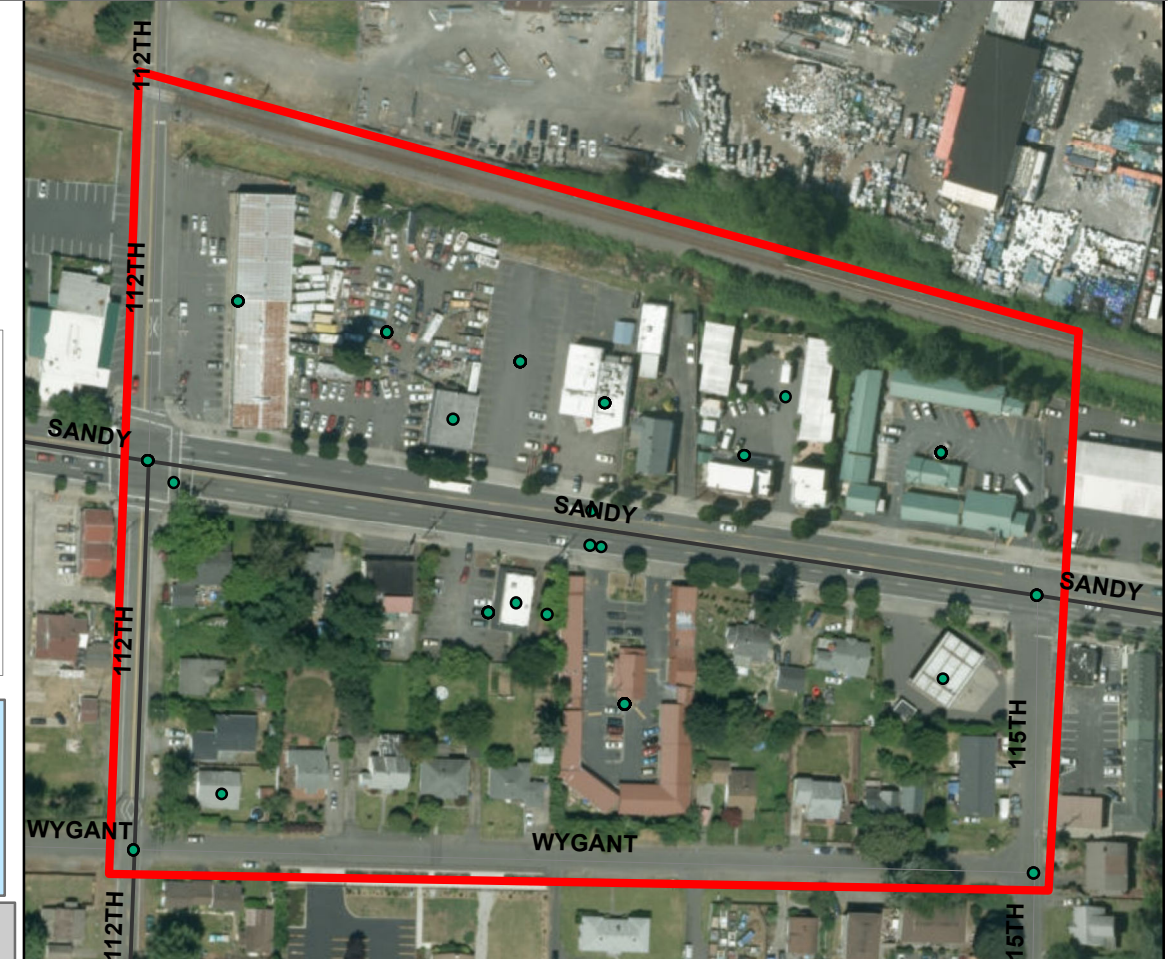
**Percent Change Property Offenses  
2017 (Sept - Nov) vs. (Jun - Aug)**

- Larceny Offense down 2.36%
- MVT Offense up 9.03%
- Vandalism Offense down 11.16%
- Burglary Offense down 8.10%
- Robbery Offense up 11.67%

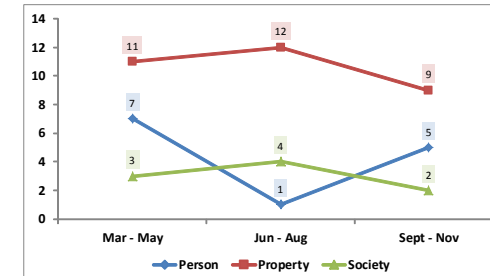


**Percent Change Society Offenses  
2017 (Sept - Nov) vs. (Jun - Aug)**

- Drug/ Narcotic Offense down 8.86%
- Weapon Law Offense same
- Prostitution Offense down 9.49%



## Sandy Focus Area 2017 March 01 - 2017 November 30

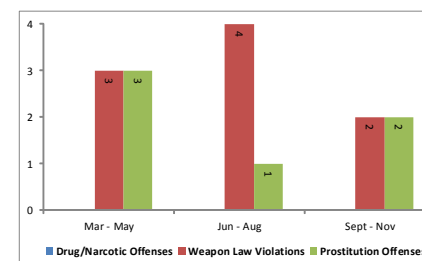
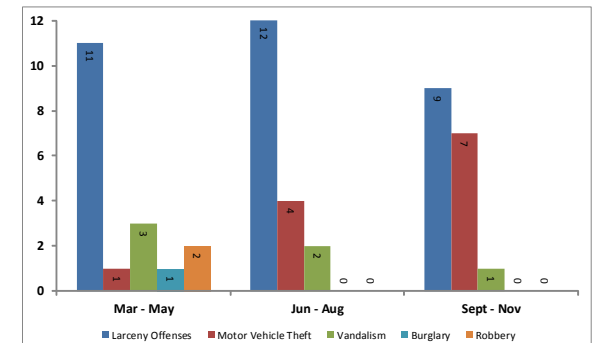


**Percent Change  
2017 (Sept - Nov) vs. (Jun - Aug)**

- Person Offense up 400.00%
- Property Offense down 25.00%
- Society Offense down 50.00%

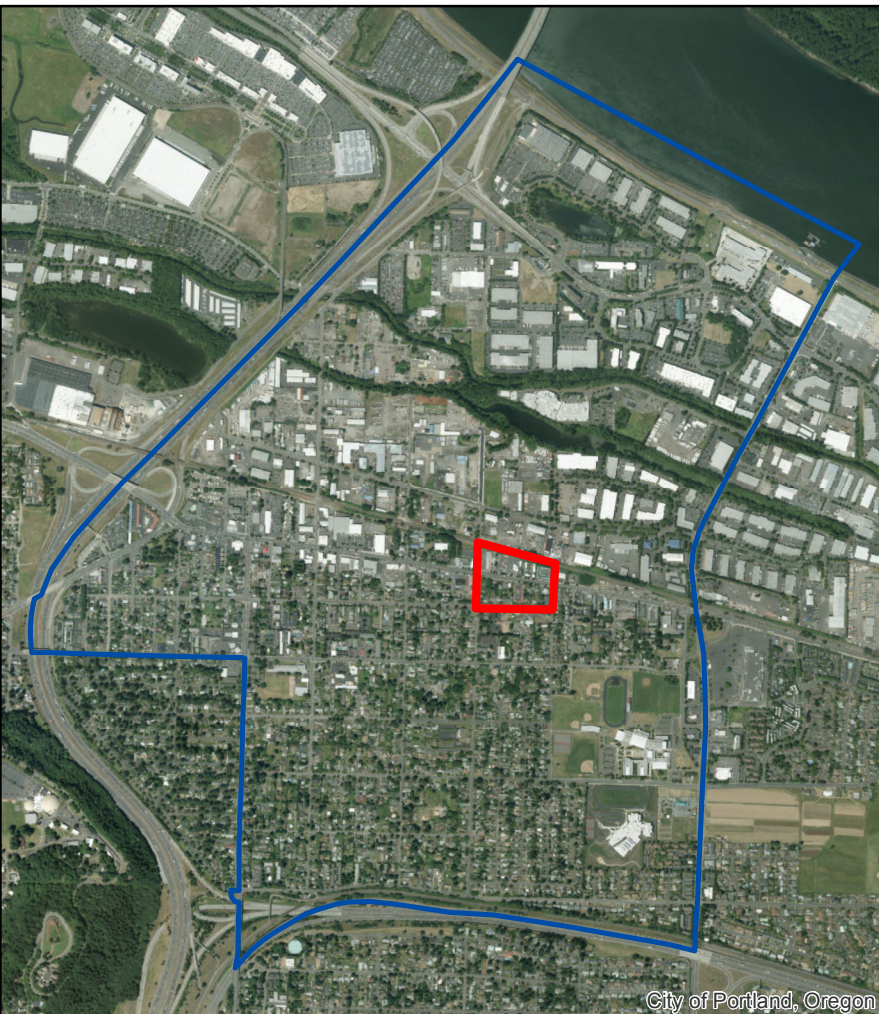
**Percent Change Property Offenses  
2017 (Sept-Nov) vs. (Jun-Aug)**

- Larceny Offense down 25.00%
- MVT Offense up 75.00%
- Vandalism Offense down 50.00%
- Burglary Offense no offense
- Robbery Offense no offense

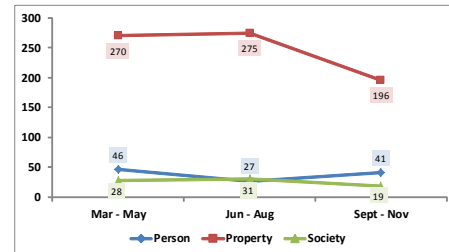


**Percent Change Society Offenses  
2017 (Sept - Nov) vs. (Jun - Aug)**

- Drug/ Narcotic no offense
- Weapon Law Offense down 50.00%
- Prostitution Offense up 100.00%



## Parkrose Neighborhood 2017 March 01 - 2017 November 30

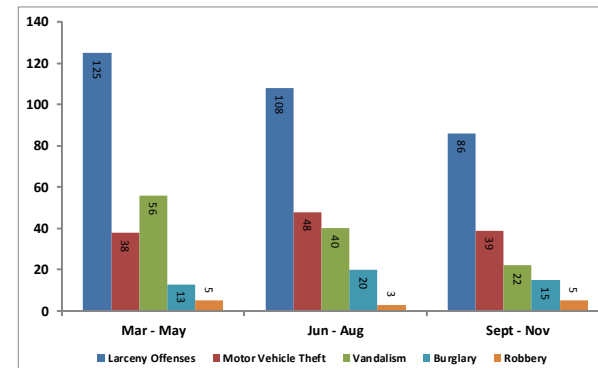


**Percent Change  
2017 (Sept - Nov) vs. (Jun - Aug)**

- Person Offense up 51.85%
- Property Offense down 28.73%
- Society Offense down 38.71%

**Percent Change Property Offenses  
2017 (Sept-Nov) vs. (Jun-Aug)**

- Larceny Offense down 20.37%
- MVT Offense down 18.75%
- Vandalism Offense down 45.00%
- Burglary Offense down 25.00%
- Robbery Offense up 66.67%



**Percent Change Society Offenses  
2017 (Sept - Nov) vs. (Jun - Aug)**

- Drug/ Narcotic Offense up 33.33%
- Weapon Law Offense down 42.86%
- Prostitution Offense down 80.00%

